

# THE WINFORD



## FEATURES

- 2,409 SQUARE FEET
- 2-CAR GARAGE
- 3 BEDROOMS, 2 ½ BATHS

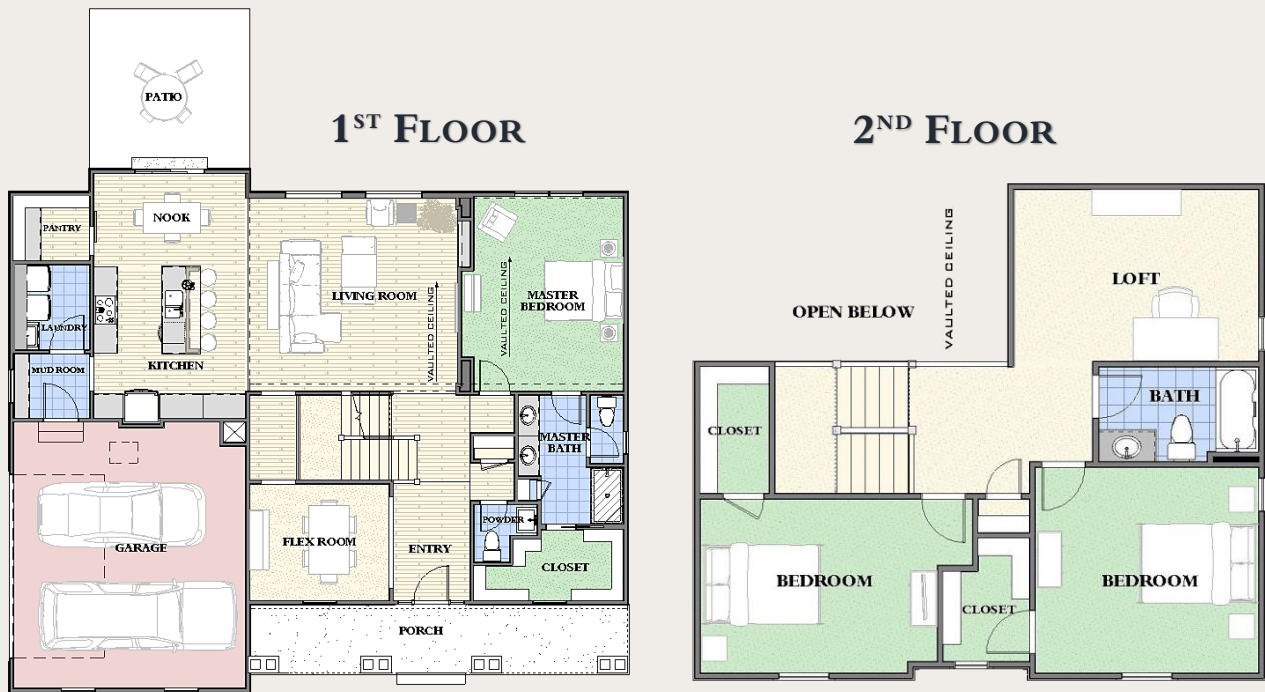
## 1<sup>ST</sup> FLOOR



## 2<sup>ND</sup> FLOOR



# THE WINFORD



(937) 436-5258

This 2,409 square foot Winford two-story home features an open concept with 3 bedrooms, 2 ½ baths, an upstairs loft and a flex room for dining or office use. Additional square footage can be found in the unfinished basement. The 2-car garage is conveniently located near the laundry room and kitchen. Walk-in bedroom closets allow for plenty of storage. A rear concrete patio is accessible from the breakfast nook for outdoor entertaining.

[WWW.ELLISCUSTOMHOMES.NET](http://WWW.ELLISCUSTOMHOMES.NET)